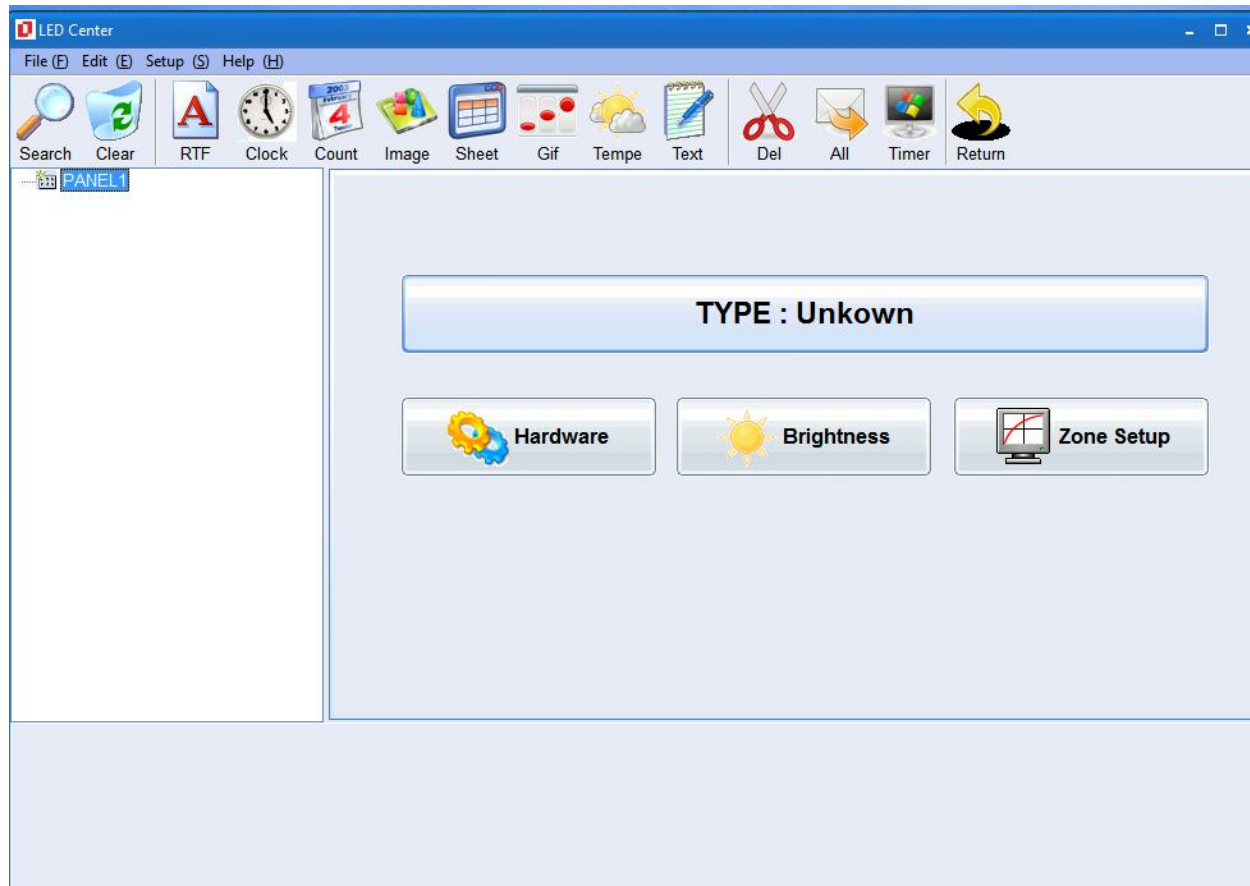


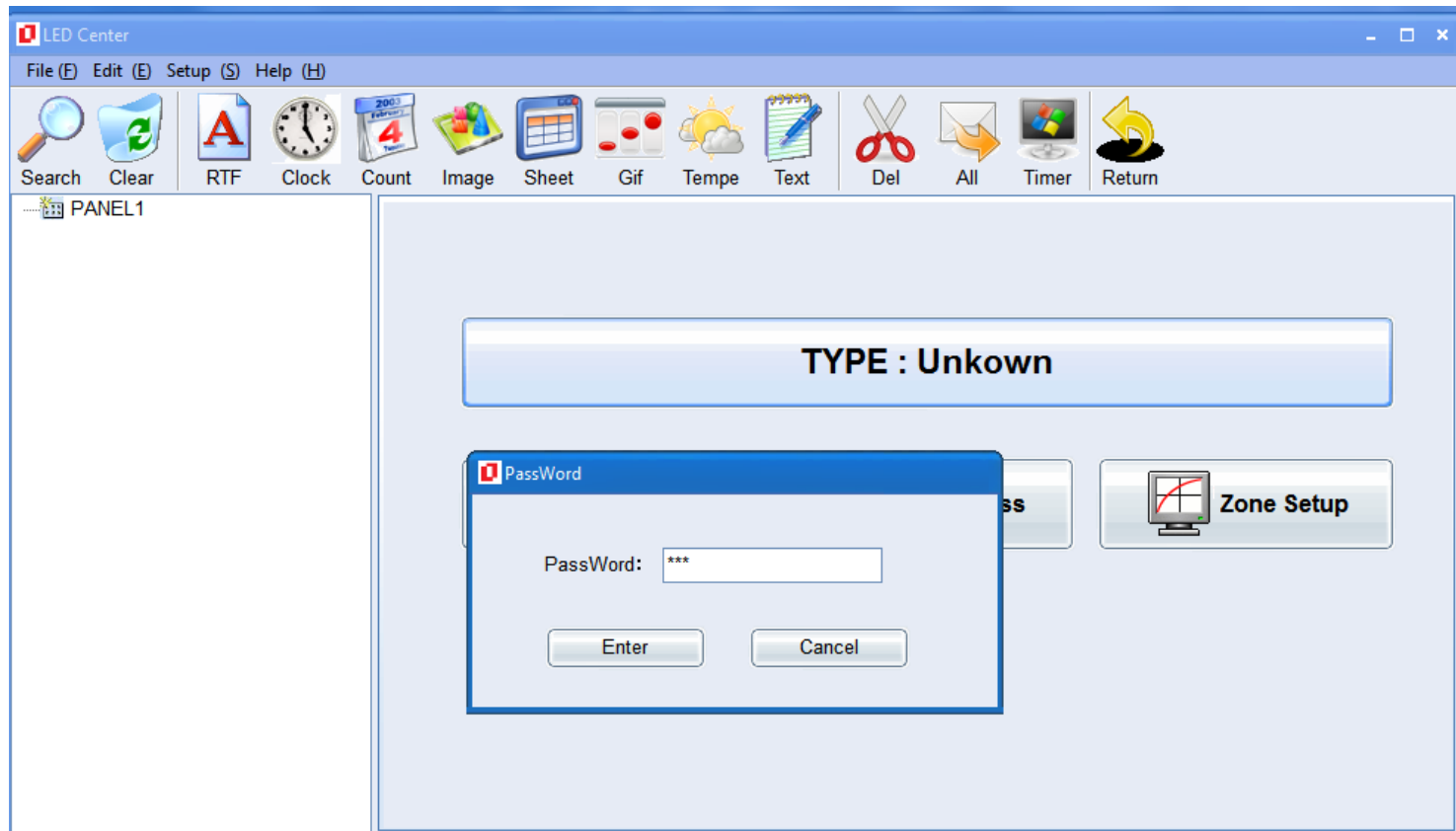
Step 1. Double click to open the LED CENTER.EXE software, if you are using Windows 7, please right click, then choose RUN AS ADMINISTRATOR



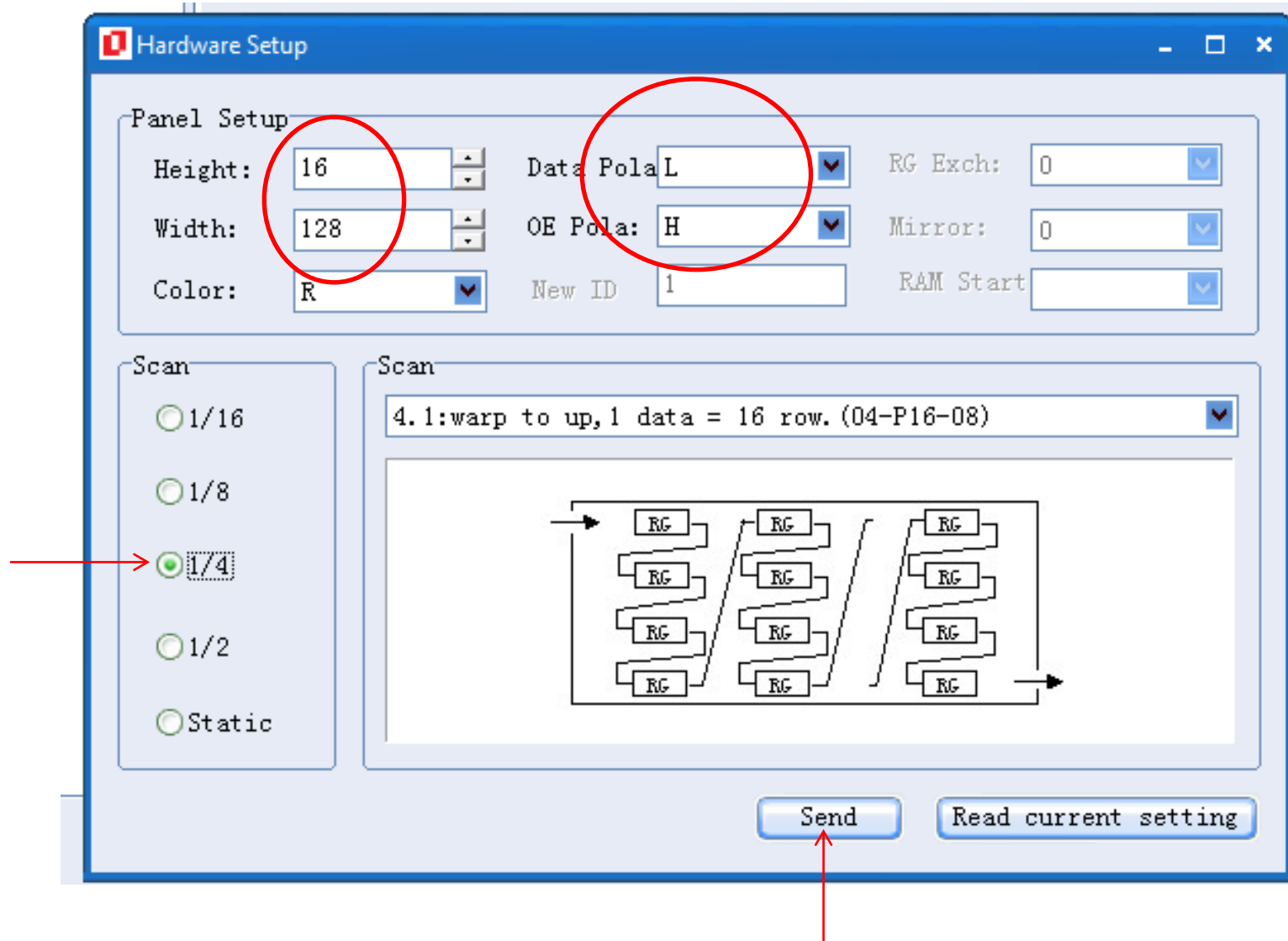
Step 2. Click Hardware



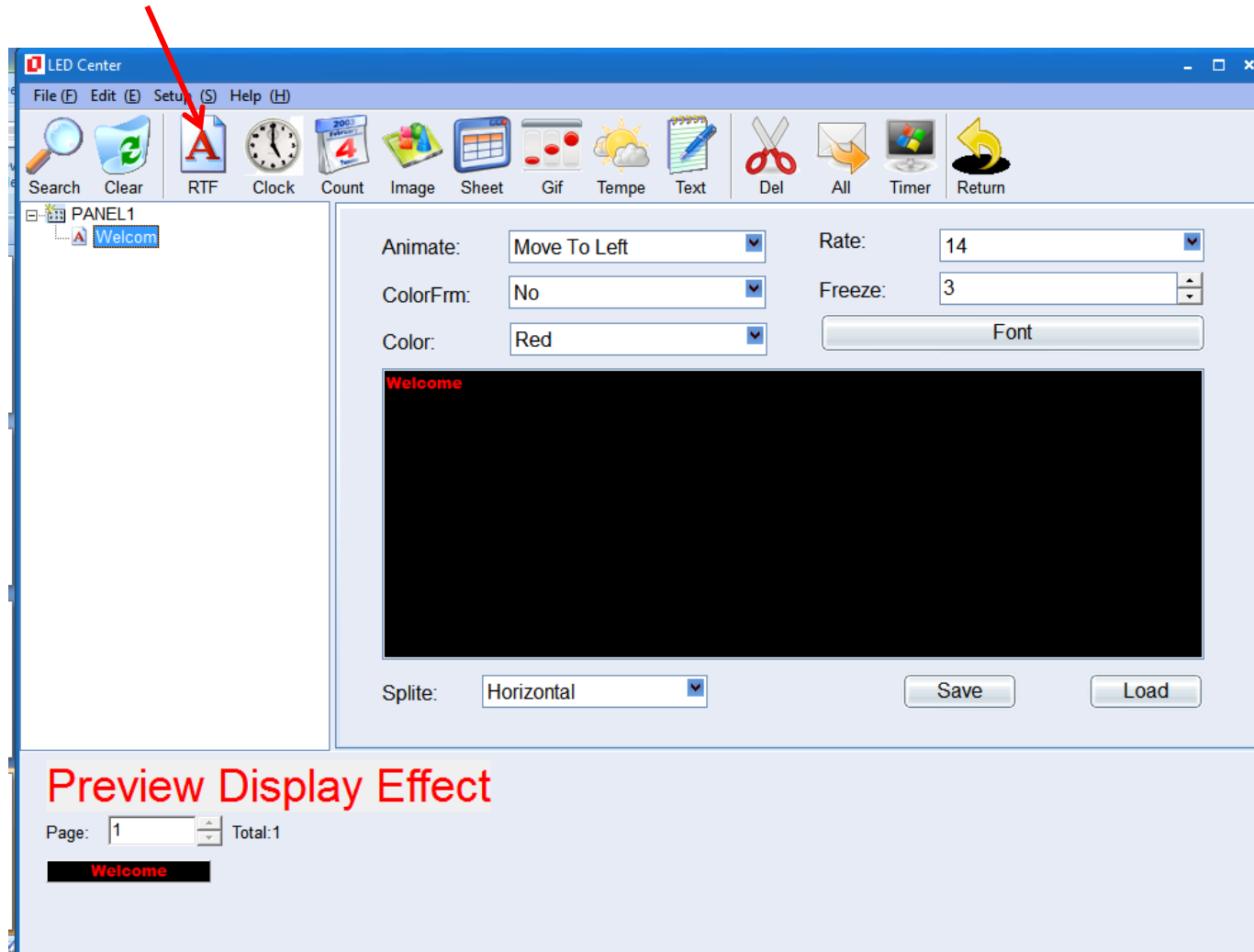
Step 3. Type 168 in the password, then enter



Step 4. In panel setup, type 16 for height, 128 for the width. Make sure Date is at L, OE is at H. Then click to choose 1/4 in the Scan, click Send to finish



Step 5. Click A to create the first screen display. It shows Welcome automatically. Move mouse cursor to the black text box, you can edit text here. Adjust message animate style in the drop down menu. You can click A again to create 2nd and more messages.



Step 6. After you finish the message set up, you can send the message to LED SCREEN directly by clicking All (LED Screen should be connected to computer) or you can save the setup program by clicking file/export SD/USB card format. Take the USB and insert in the USB connect in the LED screen .

